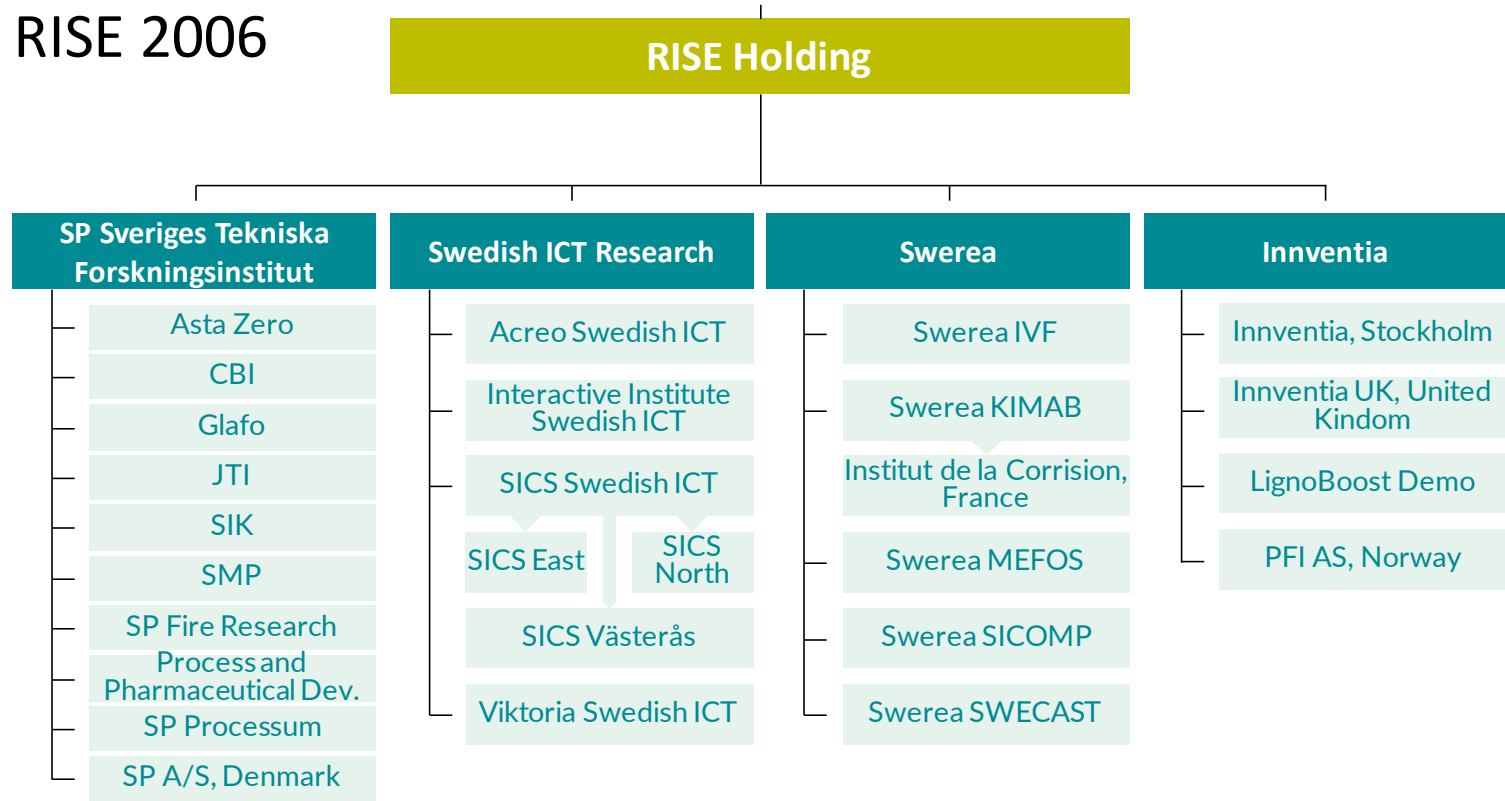


# RISE – a technical research institute with many facets...

Pia Wågberg

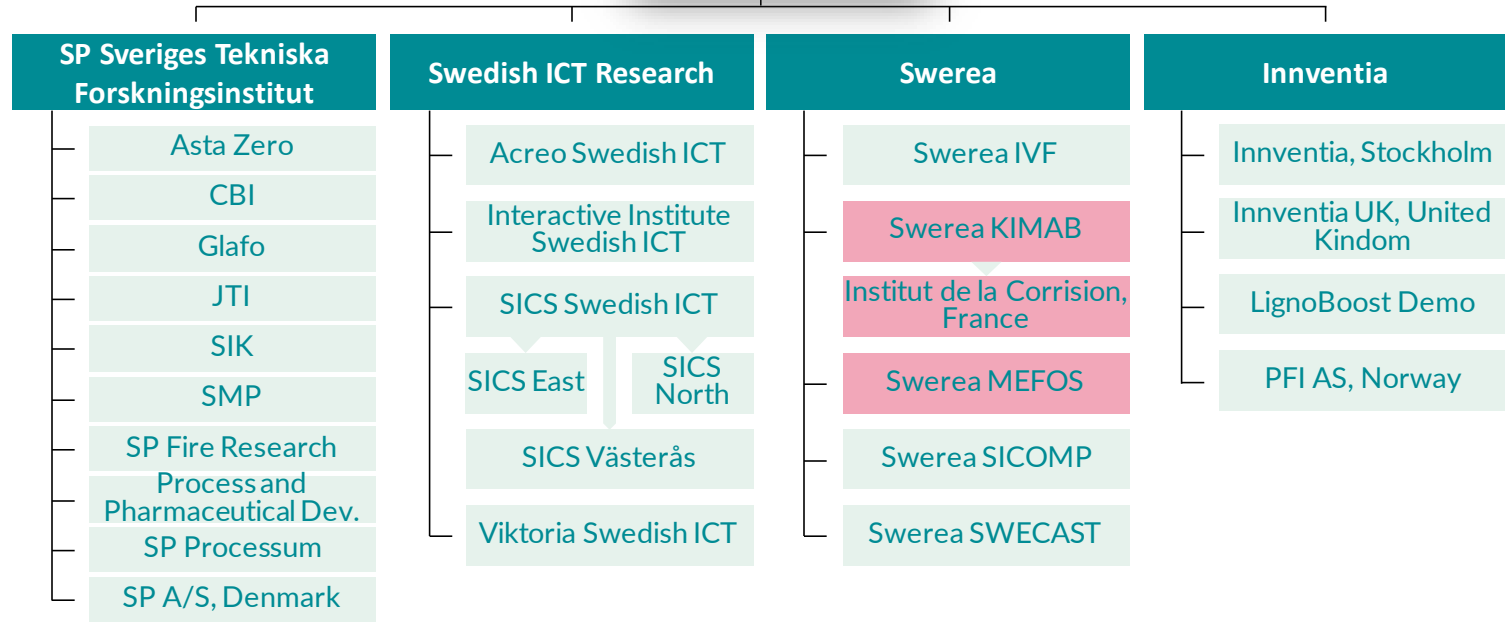
Innovation Pioneer Tank meet #46, Lund

# RISE 2006

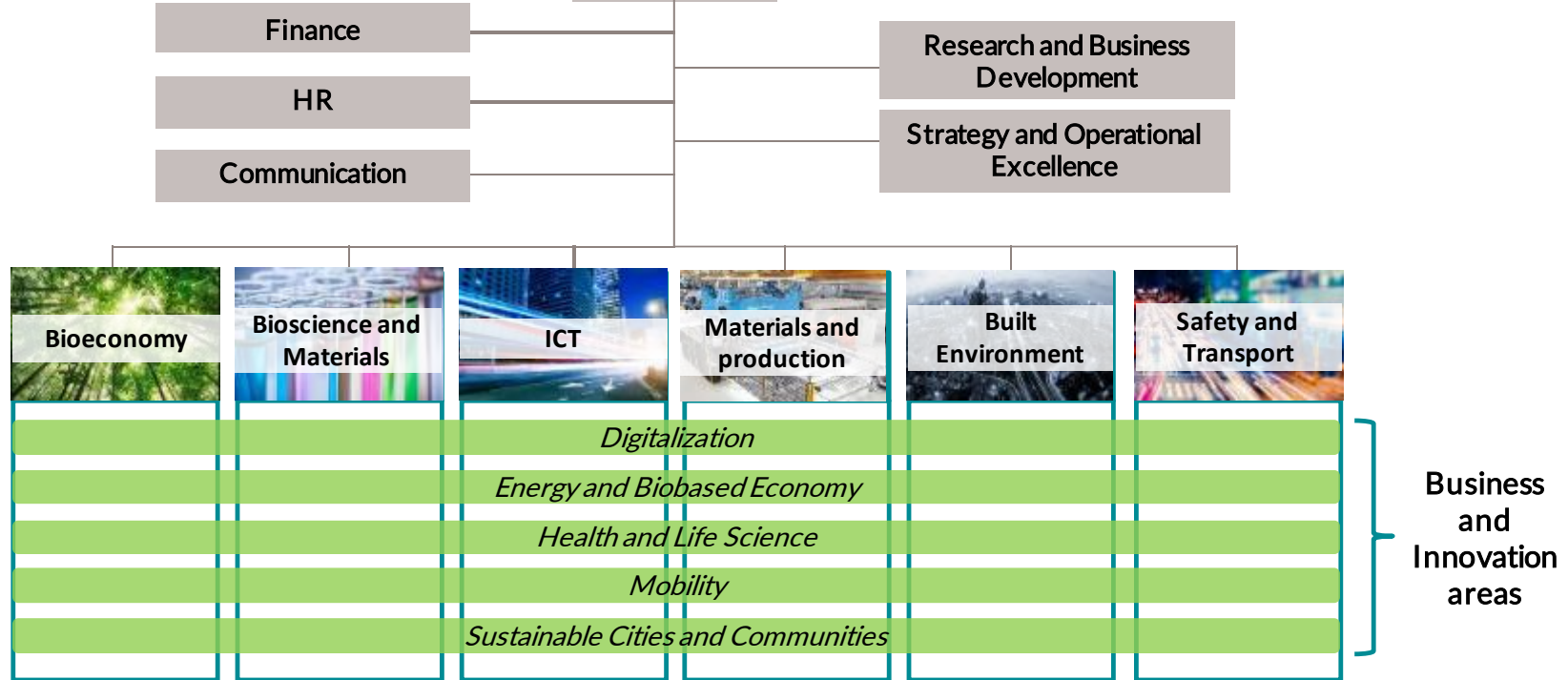


RISE 2006

RI  
SE



# RISE organisation Today



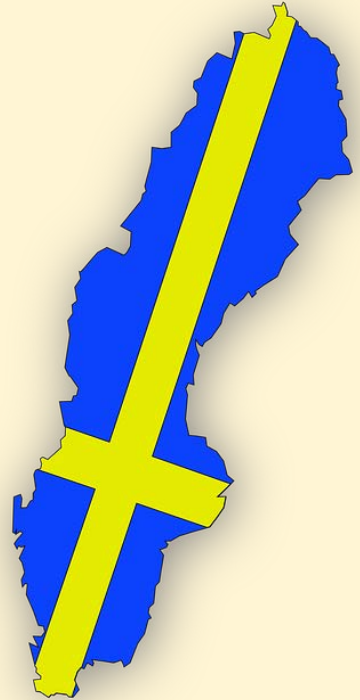
## The governments assignment for RISE:

” RISE’s mission is to work for sustainable growth in Sweden by strengthening the competitiveness and capacity for renewal of Swedish industry, as well as promoting the innovative development of society as a whole.”

Forskningsproposition 2016/17:50

## RISE in brief today:

- Present across Sweden and beyond
- 2,800 employees, 30 % with a PhD
- Turnover ~3 billion SEK (2018)
- SME clients account for ~30 %
- RISE is owner and partner in >60 % of all Sweden's Test&Demo facilities



# RISE has **competences** and **unique expertise** in many areas



Cement and concrete



Certification



Circular economy



Design



Bioeconomy



Fire and safety



Packaging



Glass



Health and Care



ICT and telecoms



Agriculture and food



Chemistry, materials  
and surfaces



Life Science



Maritime



Mechanical engineering



Mechanics



Metrology and  
measurement technology



Paper and Pulp



Process development



Built environment



Safety



Mobility



Wood



Water



# Complex challenges require cross-boundary solutions



Environmental impact and  
resource extraction



Climate change



Urbanisation



Risk and security



Globalisation



Digitalisation



Changing demographics

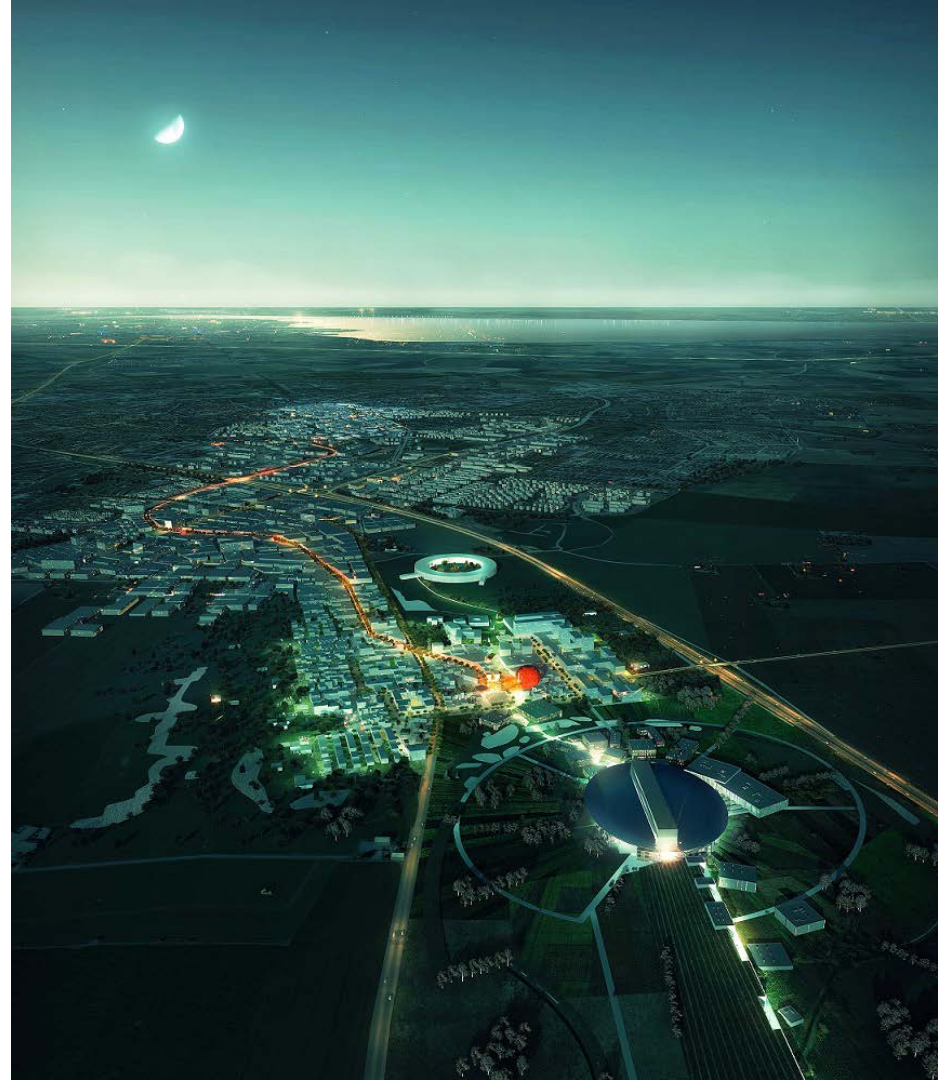


Coming challenges for  
private and public sectors



# RISE presence in Lund

- About 90 people from 5 of 6 divisions represented →
  - *Built Environment (37)*
  - *Safety and Transport (18)*
  - *ICT (12)*
  - *Bioscience and Materials (19)*
  - *Bioeconomy (1)*
- Informal and quick connections between different parts of RISE...
- Also good connctions with:
  - *Universities – LU, MaU, SLU, HKR, WMU*
  - *Research infrastructures*
  - *Industry*
  - *The region; innovation strategy and cluster*
  - *Other actors in the innovation ecosystem*



# What?

- MAX IV is the world's brightest synchrotron light lab
- World class research in:
  - Materials science
  - Structural biology
  - Chemistry
  - Nanotechnology
- ESS is a unique material research facility based on the world's most powerful neutron source
- *Material research*, from plastic and proteins to medicines and batteries, to understand how they are structured and work.

## MAX IV och ESS

# RISE task?

- The focus of the RISE initiative is to make MAX IV and ESS available to the industry by integrating X-ray and neutron technologies into the RISE toolbox
- Applied research



# Collaborative Corporate Accelerator at Ideon

## VERTICALS

Smart Cities  
Health Tech  
Smart Materials  
Future Transportation

**INWIDO**

*Great Windows & Doors*

**Ecophon**  
SAINT-GOBAIN



 **krafter**

**SKANSKA**

## TECHNOLOGIES

IR/ Augmented Reality  
Connectivity  
Cloud  
Mobility  
Big Data/ Data Science  
Artificial Intelligence



**Pia Wågberg**

**pia.wagberg@ri.se**

**076-876 73 10**



# Digitalization – focus areas



The connected individual



Public company



Industrial applications



RISE's internal digitalisation



Connected cities



E-Health

# Energy and biobased economy – focus areas



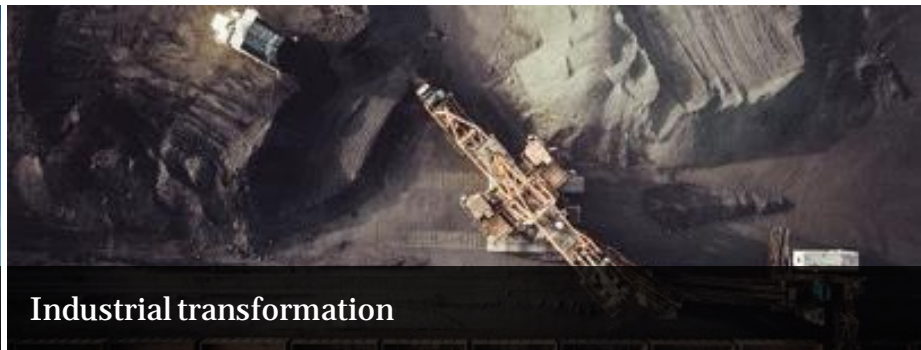
Fossil-free transportation



Circular transformation



Future energy systems



Industrial transformation



# Health and Life Science – focus areas



Prevention



E-Health



New therapies

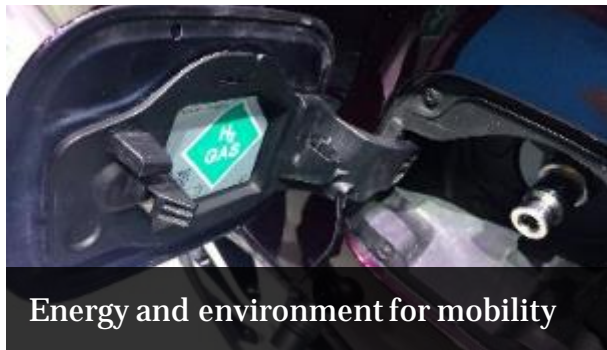


Infection Control

# Mobility – focus areas



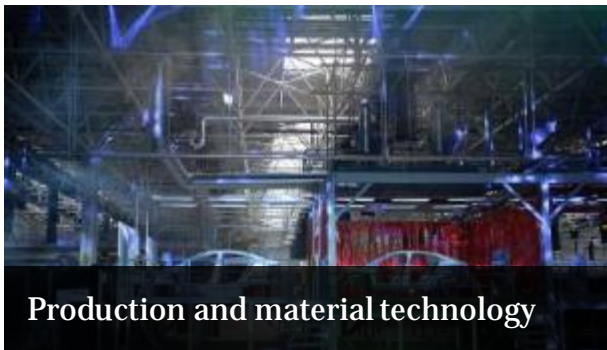
Transport systems



Energy and environment for mobility



Transport automation and safety



Production and material technology



ICT for mobility



Urban mobility

# Sustainable cities and communities— focus areas



Vibrant, sustainable districts



Resilient cities and communities



Cities and societies undergoing change



Integrated infrastructure



Connected cities



Urban mobility